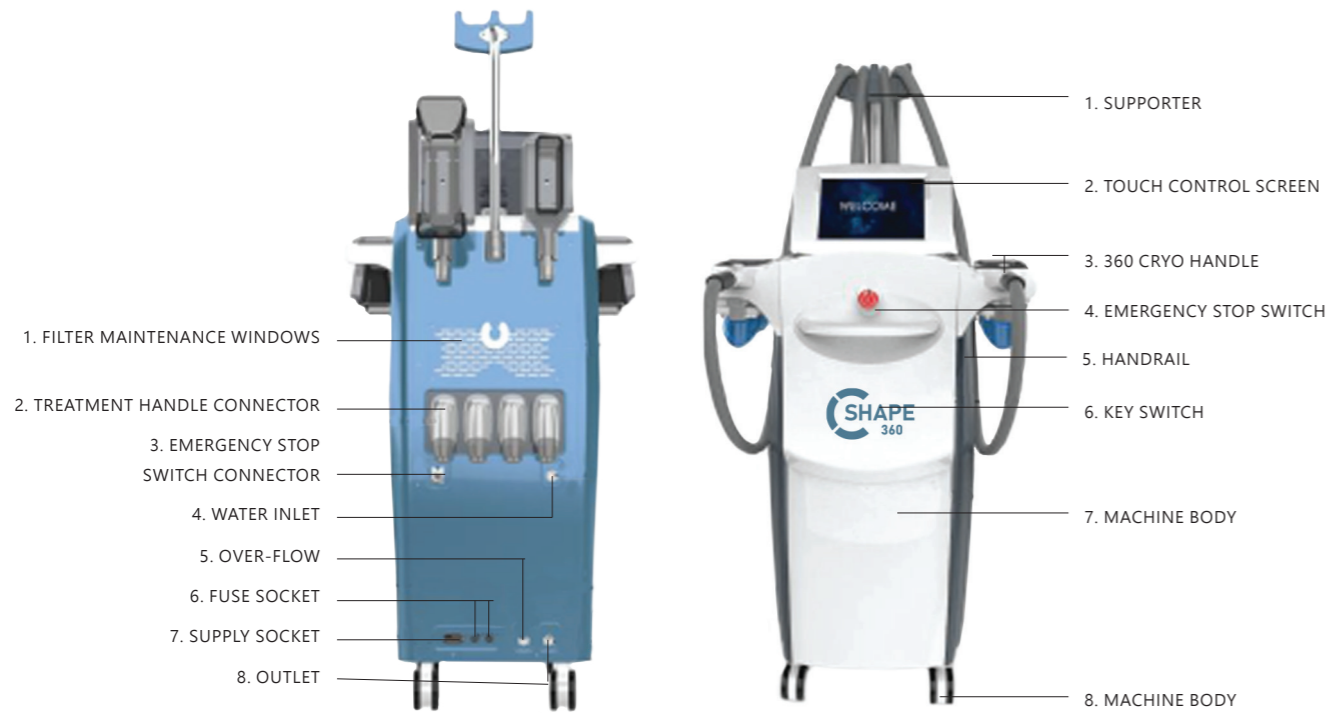
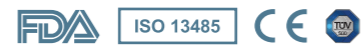


**NON-INVASIVE  
BODY  
CONTOURING**



CERTIFIED BY



[www.codeesthetics.com](http://www.codeesthetics.com)

**CODE AESTHETICS**

CORPORATE OFFICE  
B2-34/A First Floor  
Yamuna Vihar Delhi-110053

CONTACT :  
+91 7053883467,9716830460  
Info@codeesthetics.com



**CODE  
ESTHETICS**



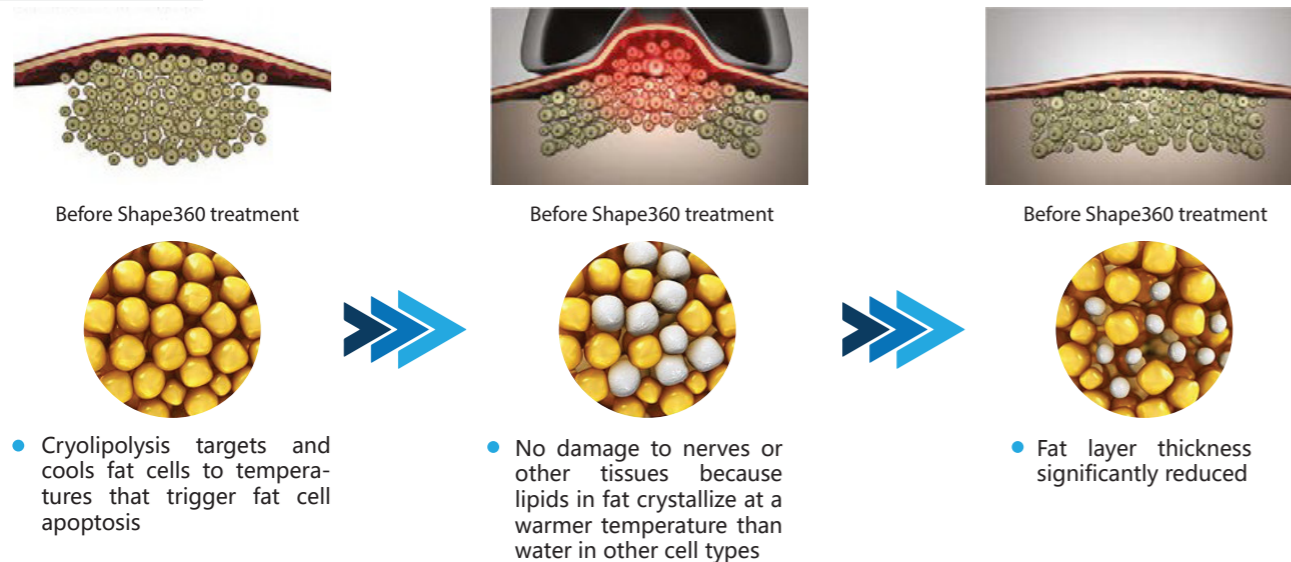
## INTRODUCTION

Shape360 adopts the most advanced cooling technology targeting fat cells in specific area cool and kill fat cells gradually without damaging surrounding tissues, achieving fat loss purpose. Once the fat cell is frozen, there will appear a natural dissolving and clearance procedure which makes the fat layer thinner, finally, fat cells will cleared from our body gently with our normal metabolism.



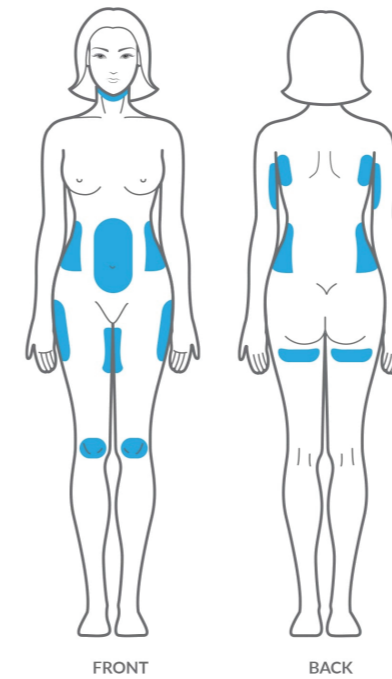
## THEORY

SHAPE-360 features the revolutionary combination of Bi-polar radio frequency (RF), infrared light energies, plus negative pressure and mechanical tissue manipulation.



The results: A reduction in the circumference of the treated area and a smoother appearance of the skin's surface.

## TREATMENT AREAS

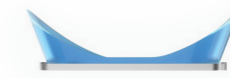
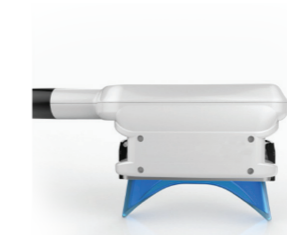


### ■ The most common treatment areas

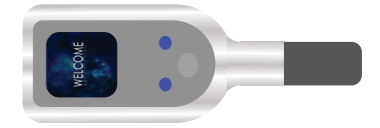
- Anterior or posterior flanks (Love Handles)
- Bra area (Back Area)
- Arms
- Upper or lower abdomen
- Knees
- Inner or outer thighs
- Neck (Double Chin)
- Hips
- Buttocks and under the buttocks
- Male Chest
- Under the armpit

## TREATMENT HANDLES

### HANDLE CUPS



1. CUPS LOCK
2. TREATMENTS CUPS
3. VACUUM LED INDICATOR
4. CONTROL BUTTON
5. RED / GREEN LED INDICATOR
6. HANDLES SCREEN



### LARGE SIZE (CURVE)

- Applicator of choice for flanks
- Curved cup design allows for better Placement and fit on curved or narrow Parts of the body

### MEDIUM SIZE (CORE)

- Most Commonly used for abdominal
- Best matches with the contour of Abdomen

### SMALL SIZE (FIT)

- Ideal for longer vertical areas of fat
- Also suggested for the arms and inner thighs (OUS)

## TECHNICAL SPECIFICATION

1. RATED INPUT POWER	AC110V/60HZ OR AC220V/50HZ
2. MAXIMUM INPUT POWER	2500W
3. HEATING TEMPERATURE	37°C - 42°C
4. COOLING TEMPERATURE	11°C - 5°C
5. VACUUM PRESSURE	10-80KPA
6. CRYO HANDLE INDICATOR LIGHT	RED(630NM)/GREEN (570NM)/50MWX4
7. VOLUME	130CMX62CMX62CM
8. TOTAL WEIGHT (NET WEIGHT)	75KG
9. OPERATIONAL ABILITY	CAN WORK 24 HOUR CONTINUOUSLY
10. FUSE MODEL	F250V L20A (PZ-816A) OR F250V L10A (PZ~816B)
11. WORKING TEMPERATURE	10°C~40°C
12. STORAGE TEMPERATURE	5°C~55°C
13. ATMOSPHERIC PRESSURE	86KPA~106KPA